

EDGE_SWING

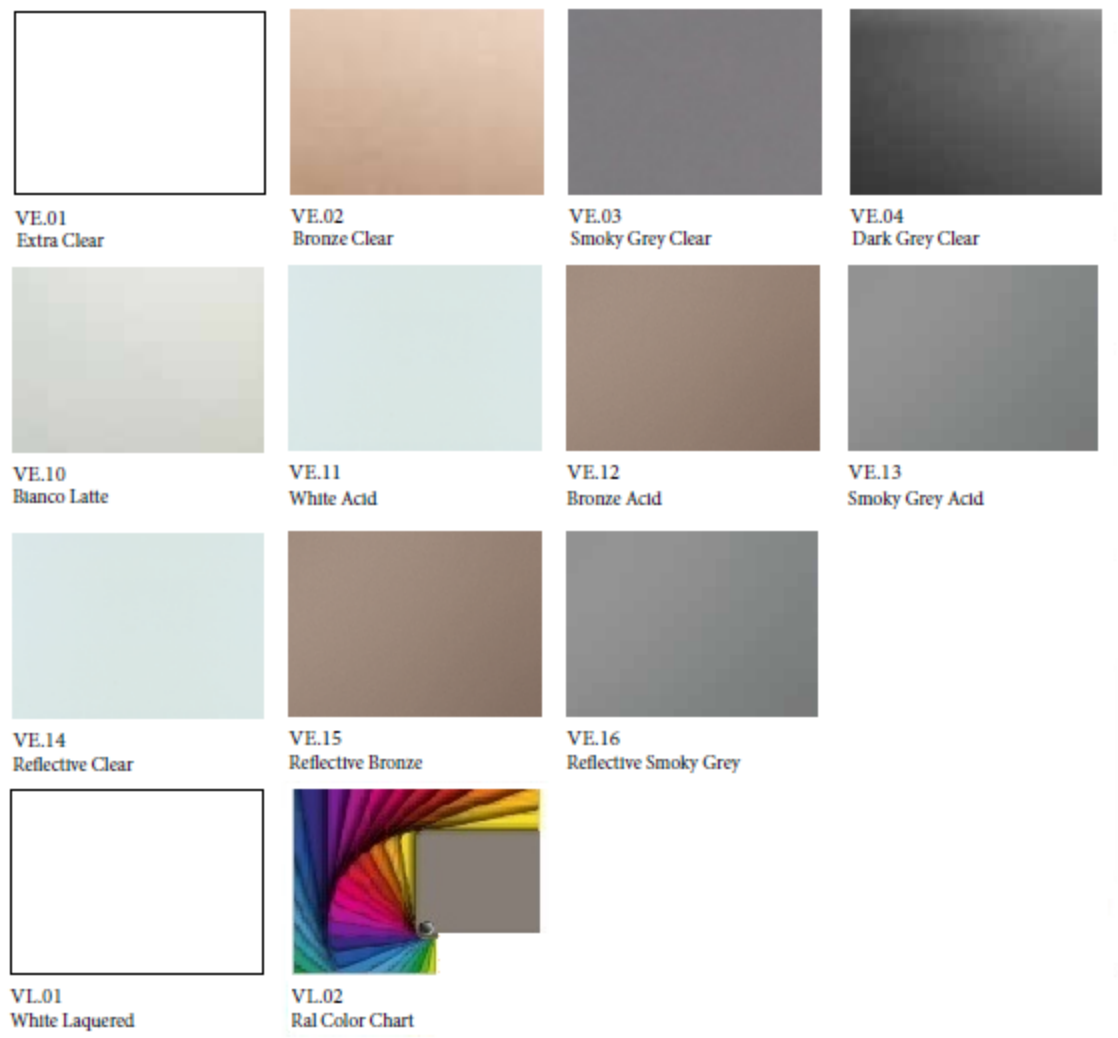
Sliding Door Panel in glass with extruded aluminum frame (alloy EN AW 6005A/T6 F25) with anodized or powder coated finishes.

Tempered or laminated double glass certified according to the safety regulation ANSI Z97.1 and UNI EN12150.

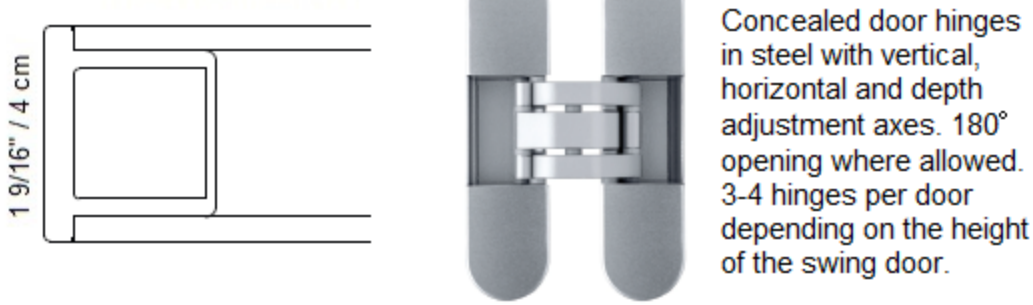
ALUMINUM FINISHES



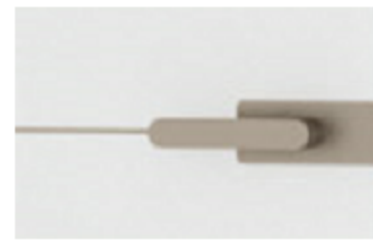
GLASSES



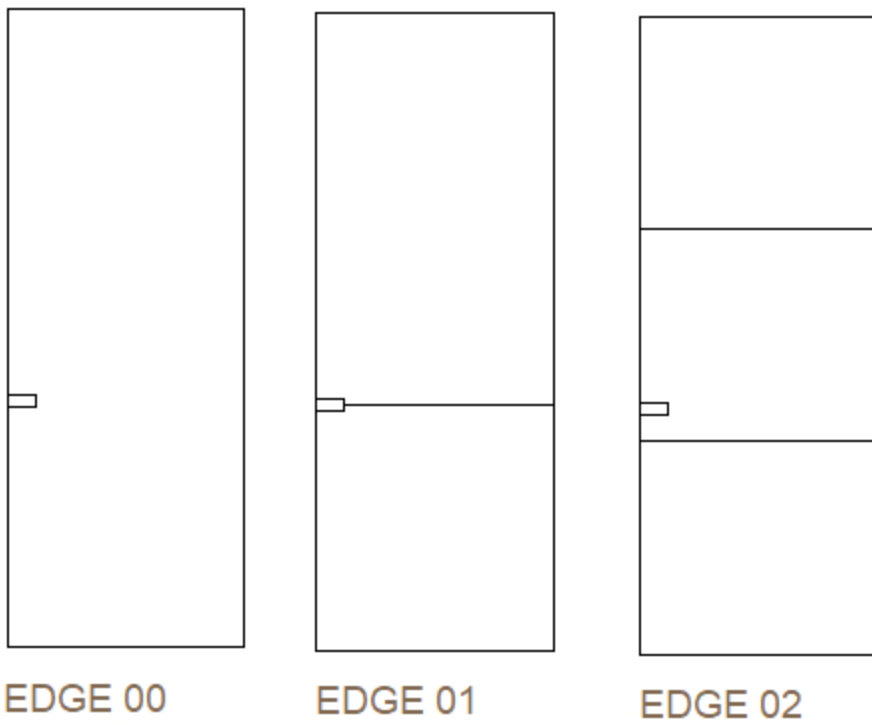
EDGE_SWING
FRAME & HINGES



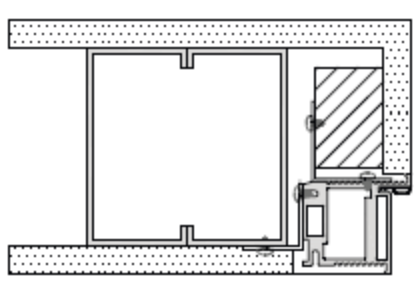
EDGE_SWING
HANDLE



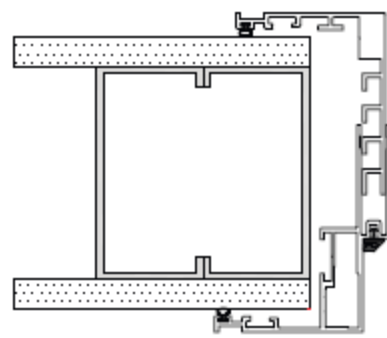
EDGE_SWING VARIANTS



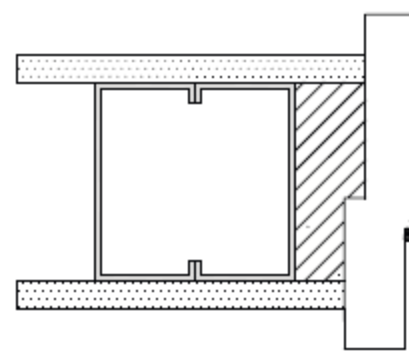
EDGE_SWING
JAMBS & CASINGS



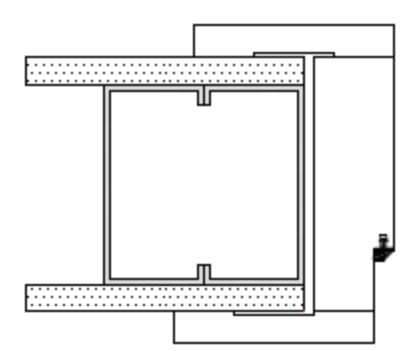
Recessed jamb
Jamb in extruded aluminum (alloy EN AW - 6060 physical state T6) with primer ready to be painted, rubber seal designed to ensure smooth and silent closing amortized. Metal bracket and wooden blocking allow a fast and easy fastening.



Aluminum door casings
Telescoping door posts in extruded aluminum (alloy EN AW - 6060 physical state T6). Jamb with spacer ring allowing easy and fast leveling and rubber seal designed to ensure smooth and silent closing amortized. Casing with metal bracket with Velcro allows a fast and easy fastening and rubber seal to provide for any compensation due to the non-linearity of the wall. Adjustable casing range from 4 5/16" to 5 7/8" (11 to 15 cm) with extension up to 12 9/16" (32 cm.)



Wooden jamb
Jamb in blockboard wood veneered, rubber seal designed to ensure smooth and silent closing amortized. Custom made according to the tickness of the wall.



Wooden door casings
Jamb and casing in blockboard wood and multilayer veneered, rubber seal designed to ensure smooth and silent closing amortized. Custom made in width according to the tickness of the wall.

EDGE_SWING
WOOD FINISHES

