

SWING

Swing Door Panel in glass with extruded aluminum frame (alloy EN AW 6005A/T6 F25) with anodized or powder coated finishes.

SWING STEEL

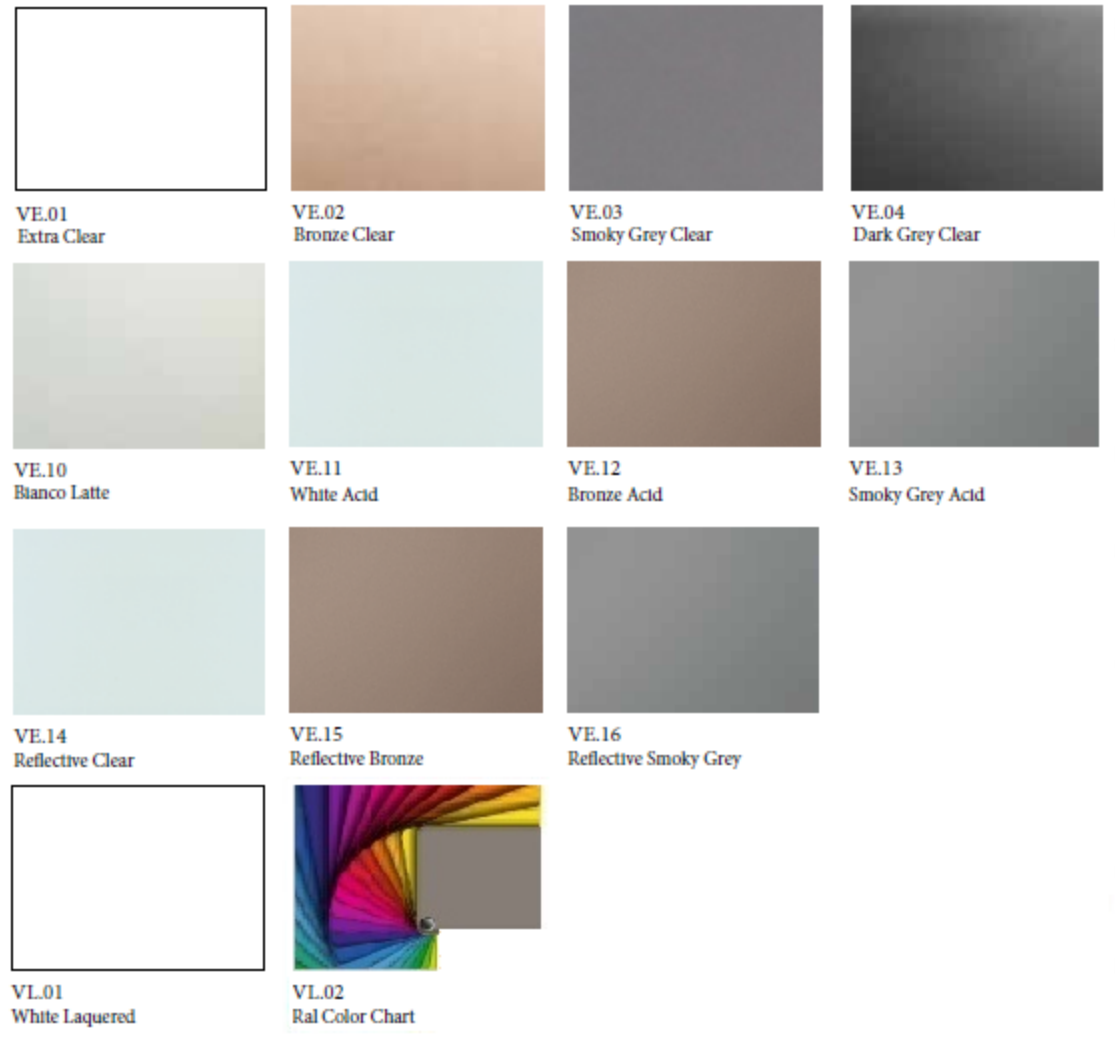
Swing Door Panel in glass with extruded aluminum frame (alloy EN AW 6005A/T6 F25). Frame cover in stainless steel. Stainless steel or powder coated finishes.

Tempered or laminated glasses certified according to the safety regulation ANSI Z97.1 and UNI EN12150.

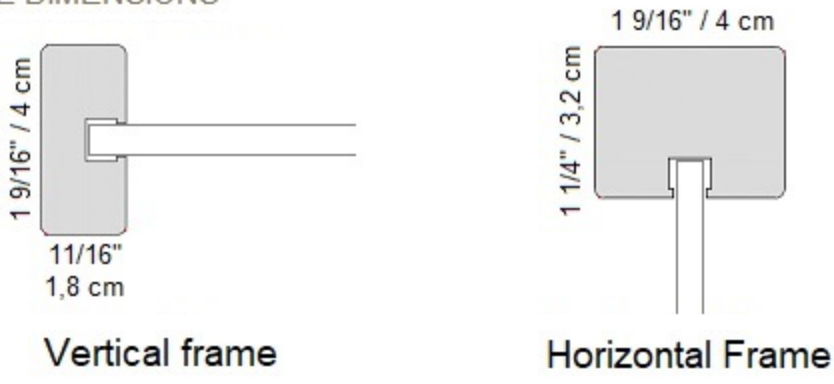
ALUMINUM & STEEL FINISHES



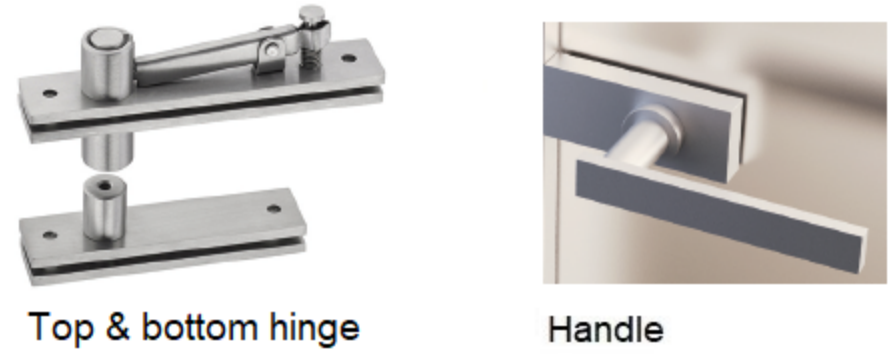
GLASSES



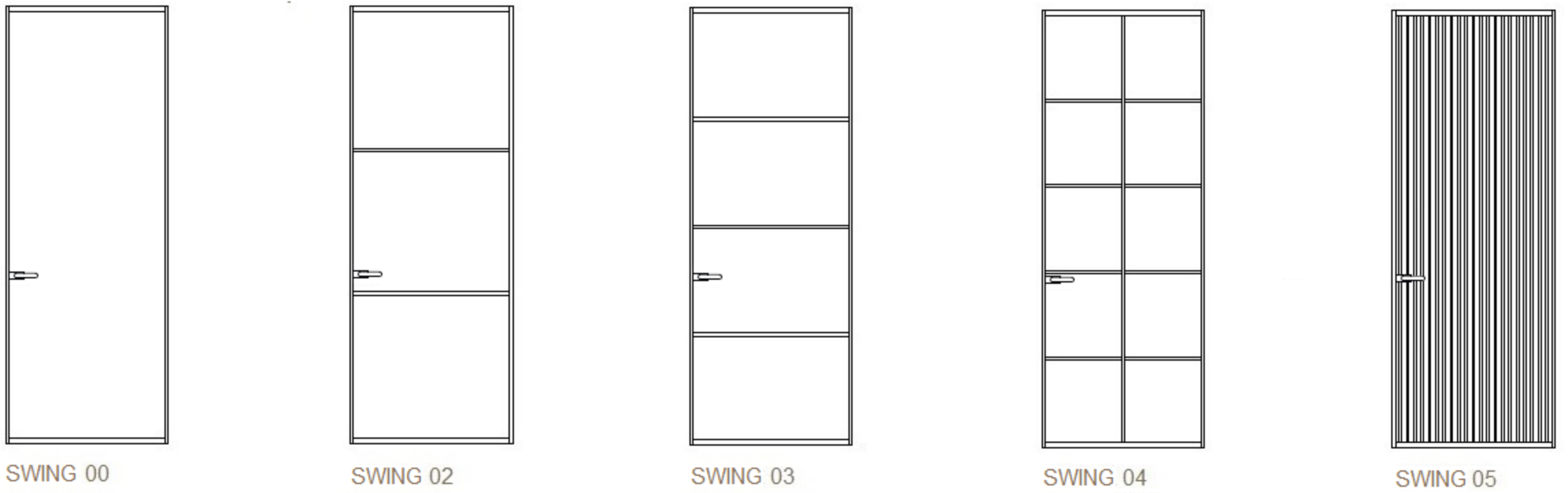
SWING | SWING STEEL
FRAME DIMENSIONS



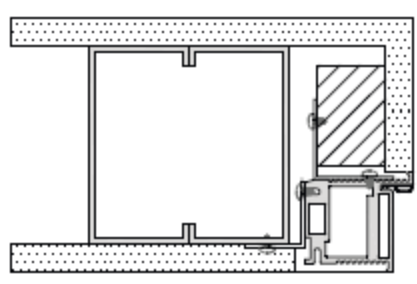
SWING | SWING STEEL
HINGES & HANDLES



SWING | SWING STEEL VARIANTS

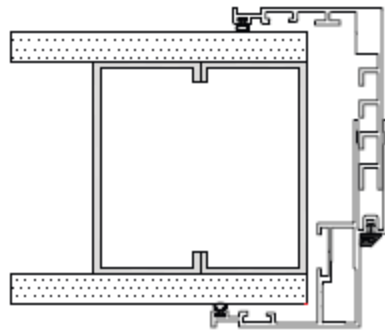


SWING | SWING STEEL
JAMBS & CASINGS



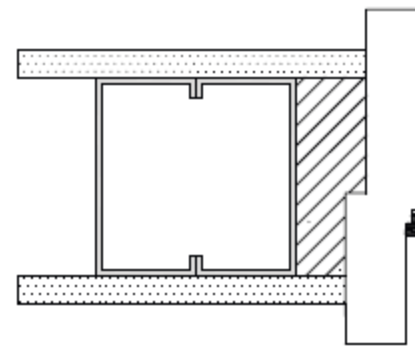
Recessed jamb

Jamb in extruded aluminum (alloy EN AW - 6060 physical state T6) with primer ready to be painted, rubber seal designed to ensure smooth and silent closing amortized. Metal bracket and wooden blocking allow a fast and easy fastening.



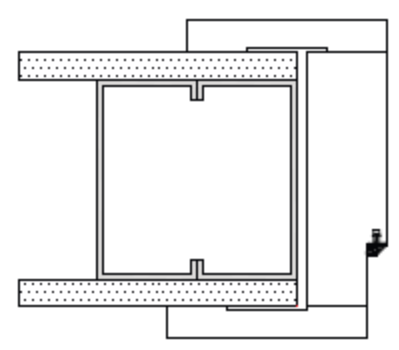
Aluminum door casings

Telescoping door posts in extruded aluminum (alloy EN AW - 6060 physical state T6). Jamb with spacer ring allowing easy and fast leveling and rubber seal designed to ensure smooth and silent closing amortized. Casing with metal bracket with Velcro allows a fast and easy fastening and rubber seal to provide for any compensation due to the non-linearity of the wall. Adjustable casing range from 4 5/16" to 5 7/8" (11 to 15 cm) with extension up to 12 9/16" (32 cm).



Wooden jamb

Jamb in blockboard wood veneered, rubber seal designed to ensure smooth and silent closing amortized. Custom made according to the tickness of the wall.



Wooden door casings

Jamb and casing in blockboard wood and multilayer veneered, rubber seal designed to ensure smooth and silent closing amortized. Custom made in width according to the tickness of the wall.

SWING | SWING STEEL
WOOD FINISHES

